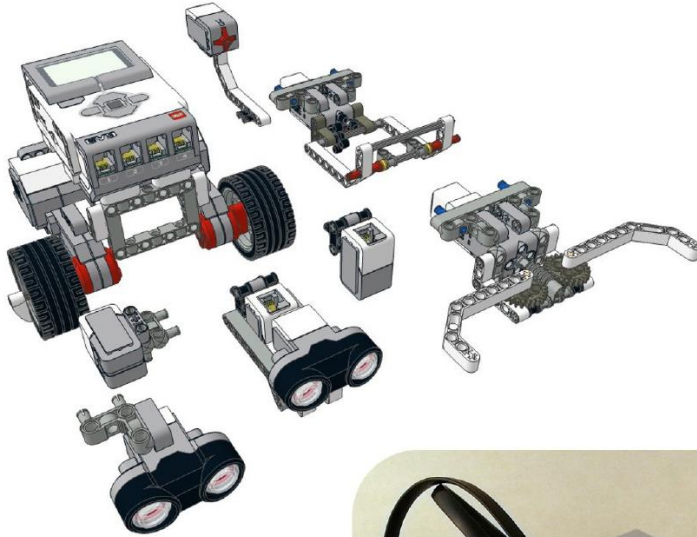


Building Instructions

RileyRover Base Design and Attachments



Please Share!
Attribution to
www.damienkee.com

Not for commercial use unless
prior permission granted.



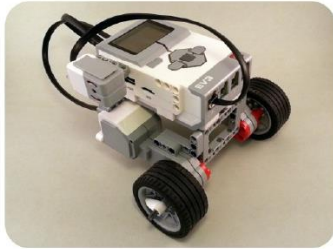
Sensor and Motor Attachments for the RileyRover Base design



Ultrasonic Sensor



Colour Sensor



Gyro Sensor



Gripper

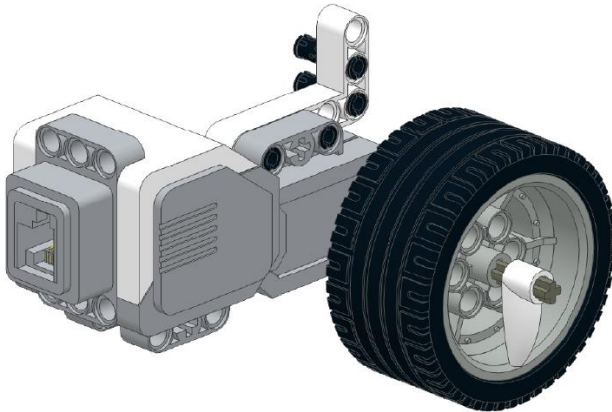
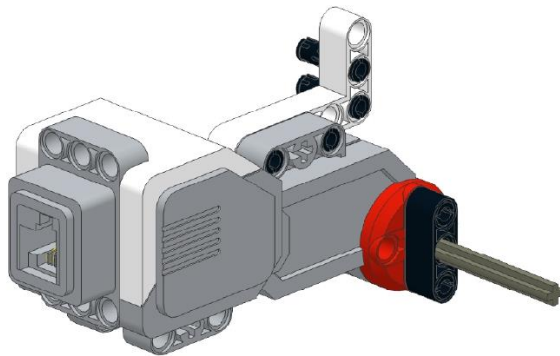
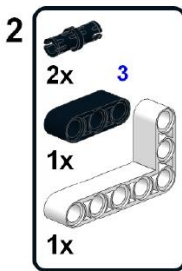
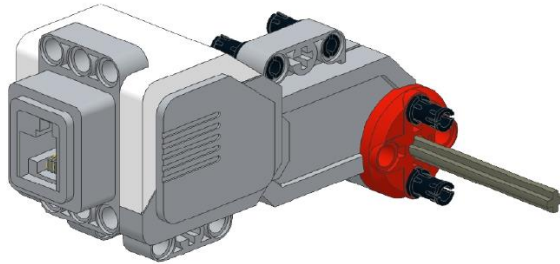
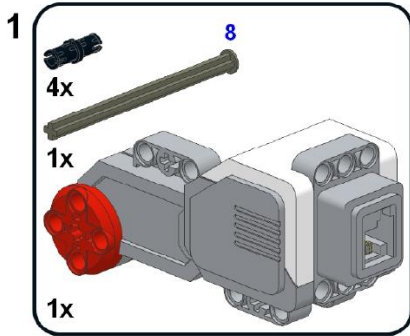


**Colour / Ultrasonic
combination**

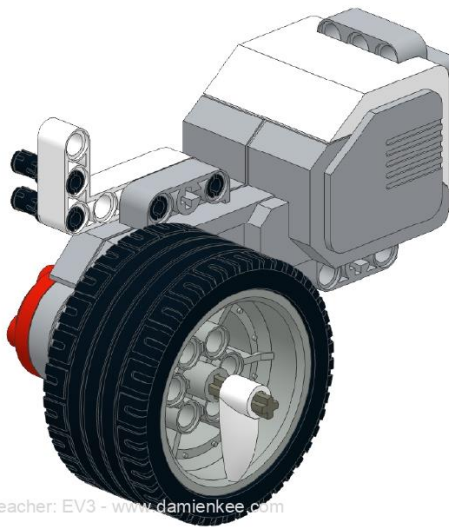
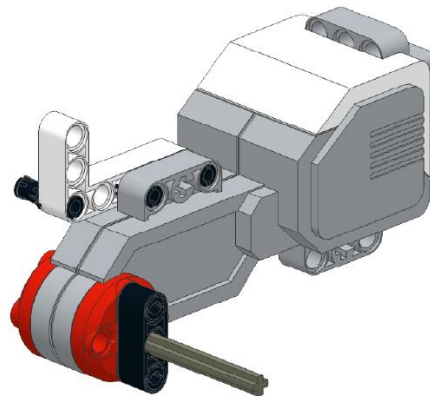
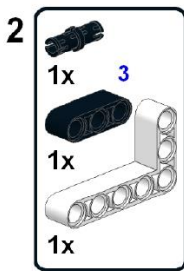
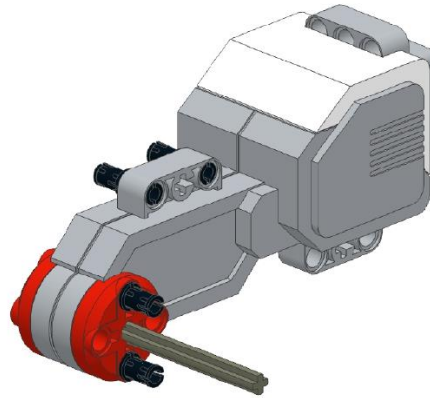
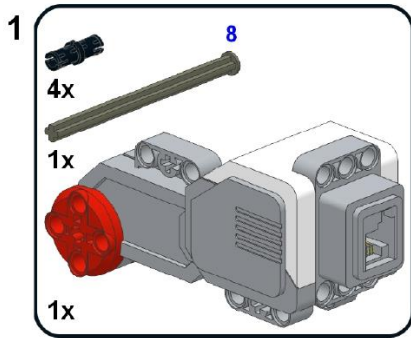


Cargo Delivery

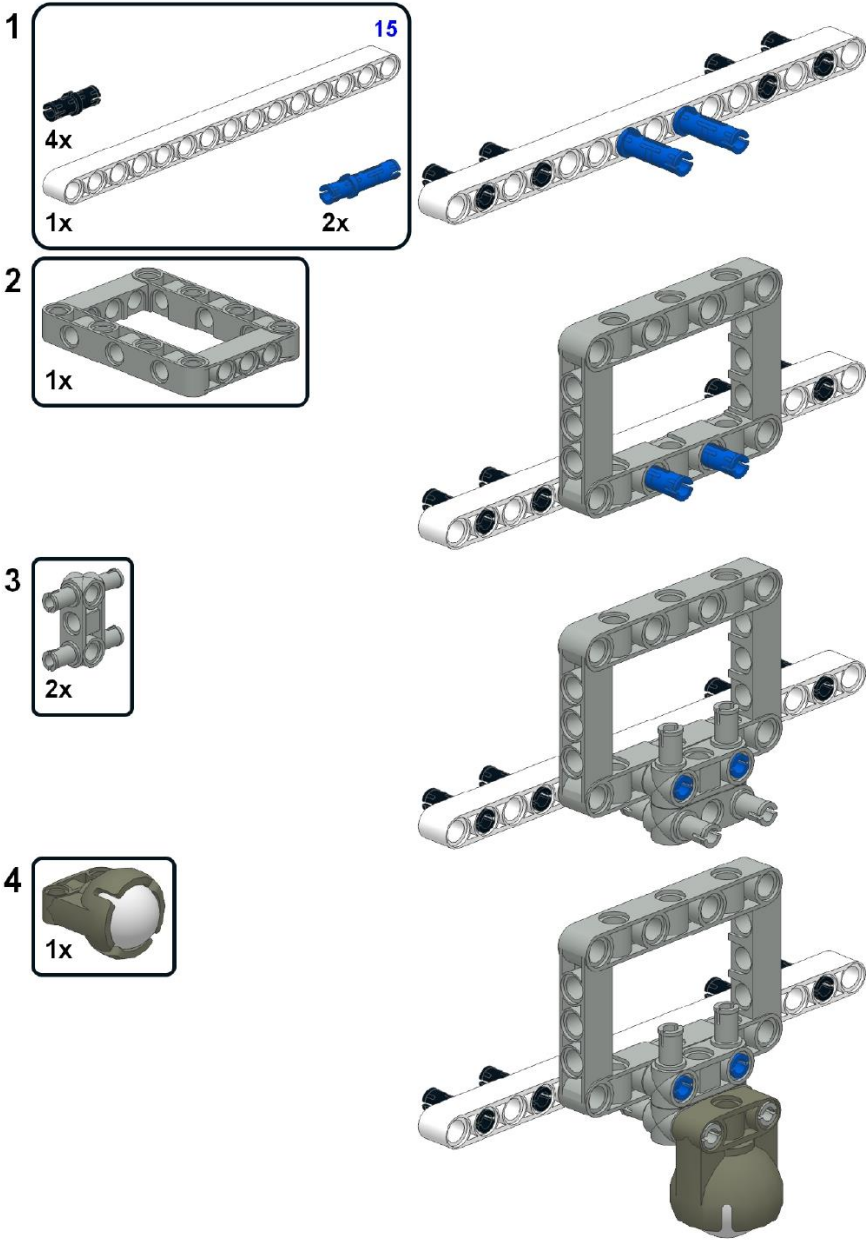
Right Motor Assembly



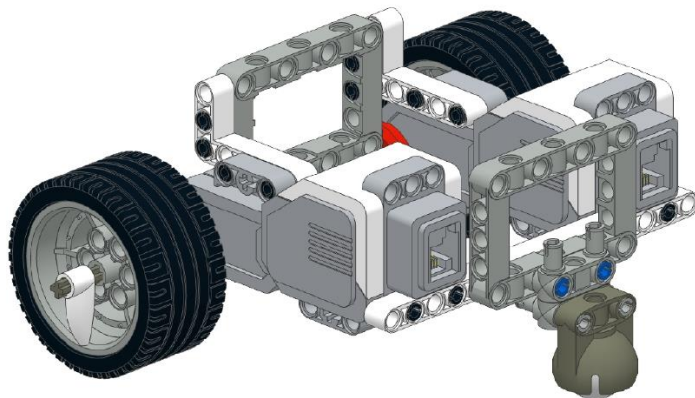
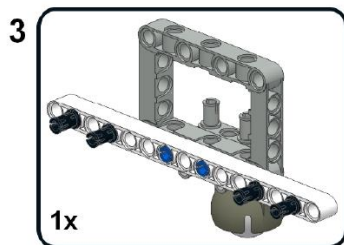
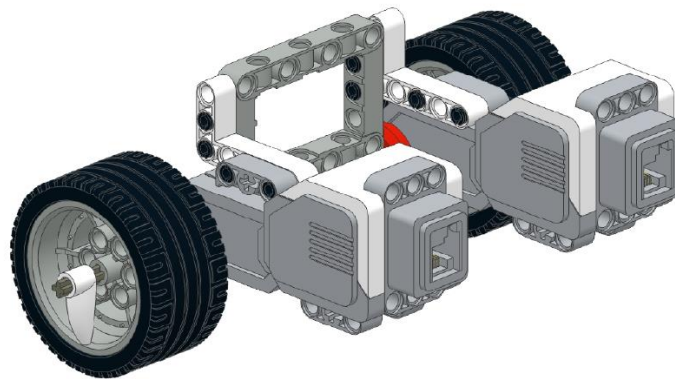
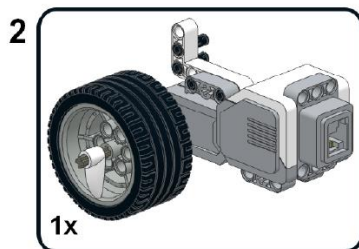
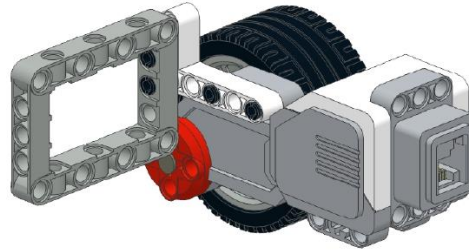
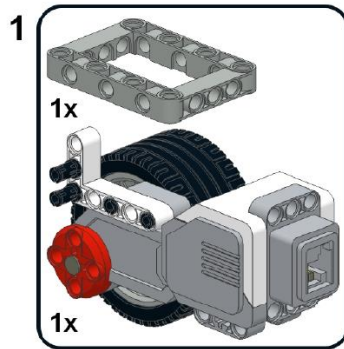
Left Motor Assembly



Back Castor Assembly

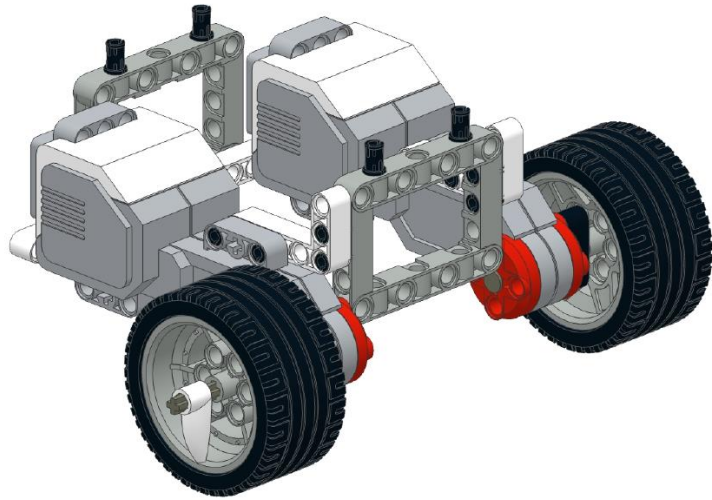


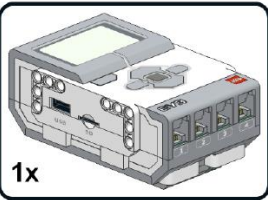
Assemble Right Motor, Left Motor and Back Castor

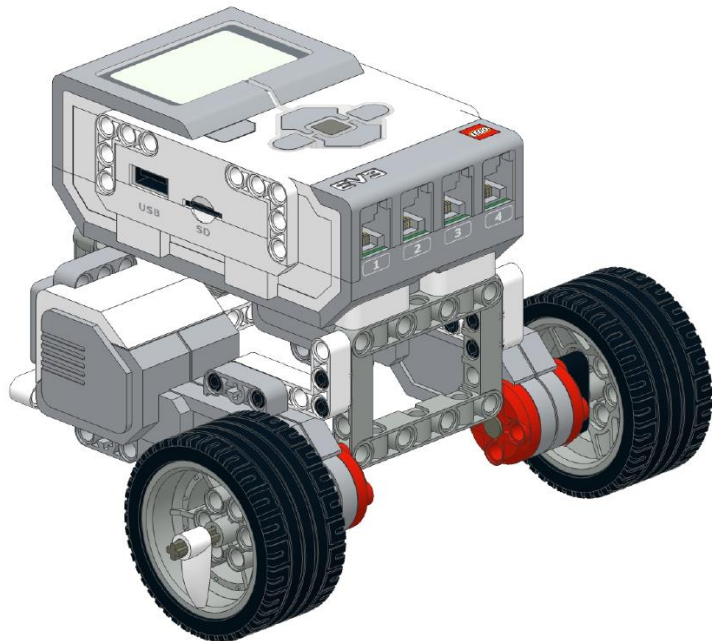


Turn Base around

4 
4x

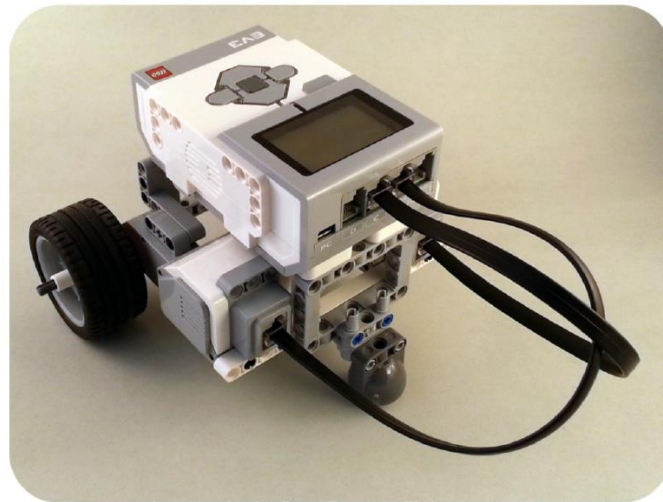


5 
1x

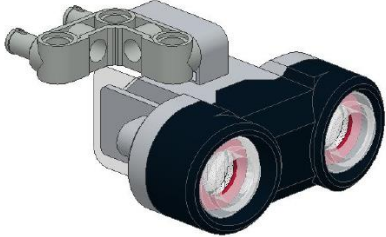
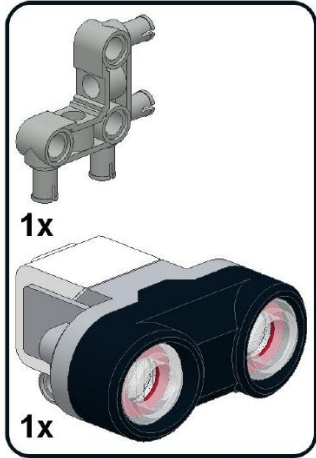


Connect the Cables

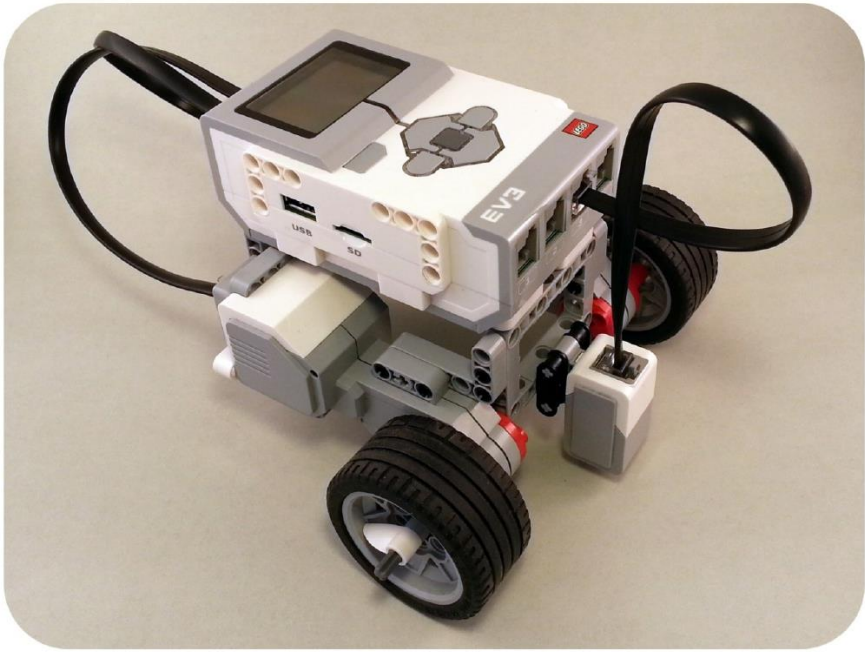
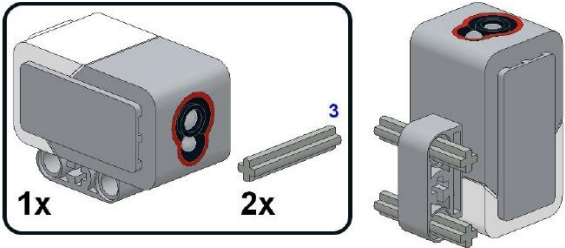
Left Motor : B - Right Motor : C
(for this design, the cables will cross over)



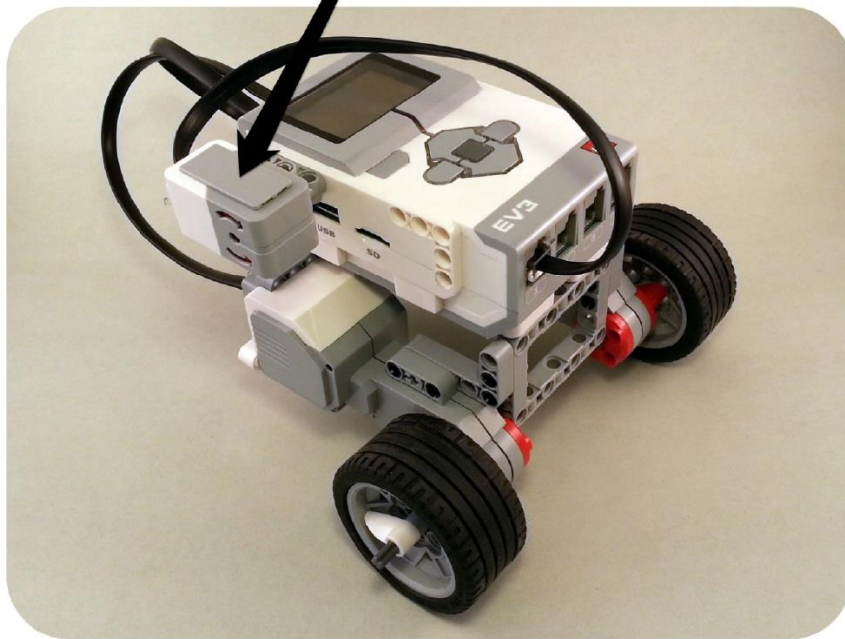
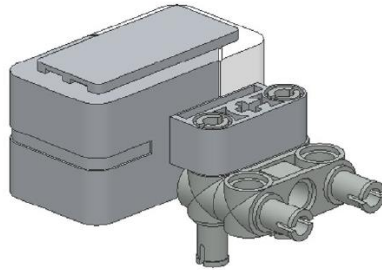
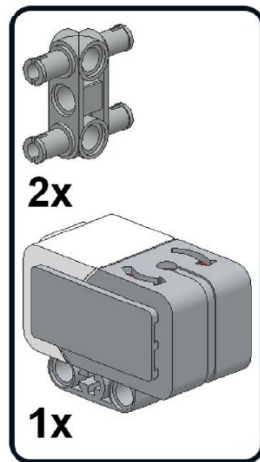
Ultrasonic Sensor Attachment



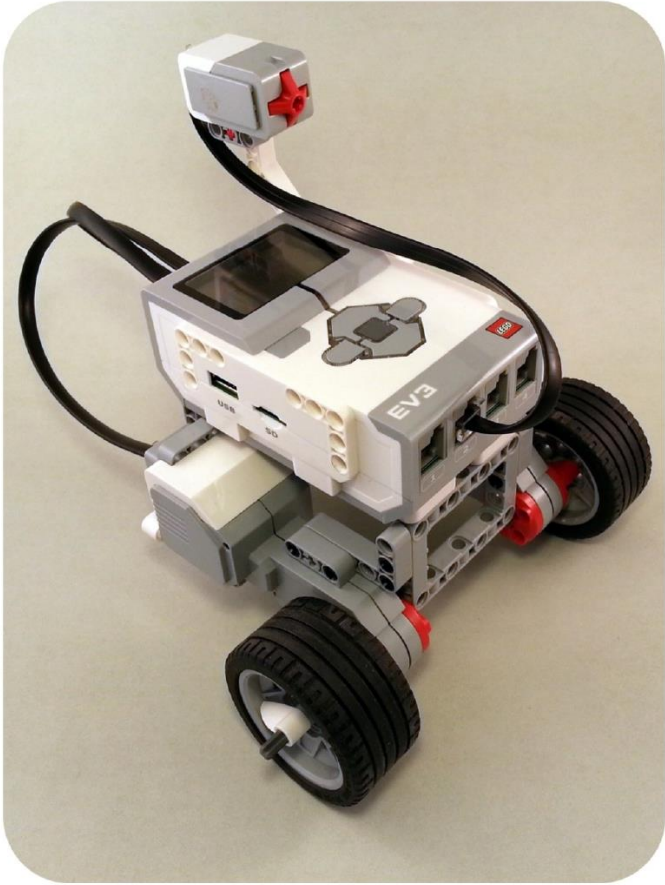
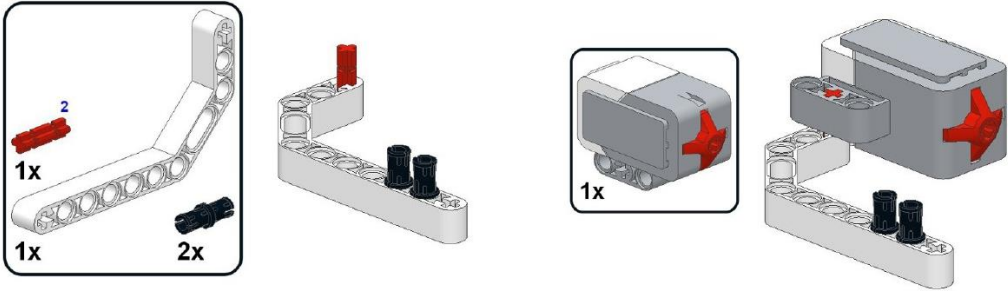
Colour Sensor Attachment



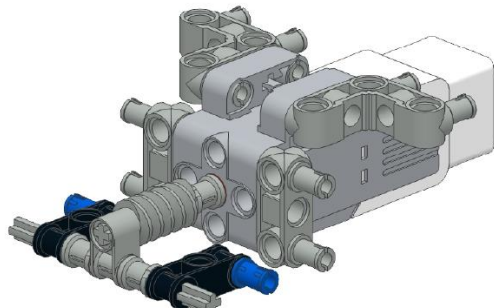
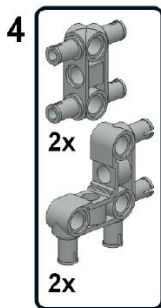
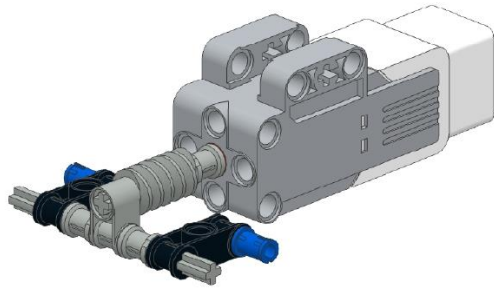
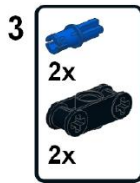
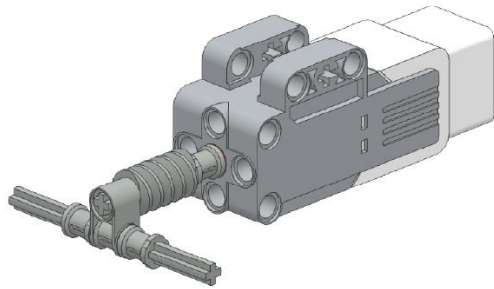
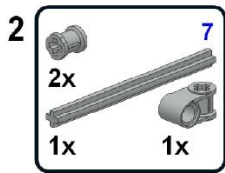
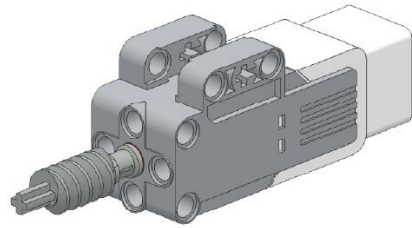
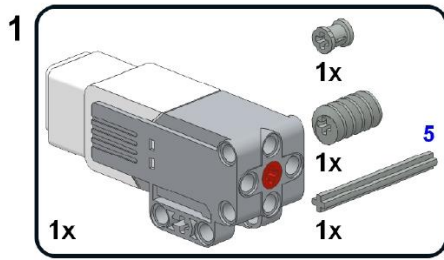
Gyro Sensor Attachment

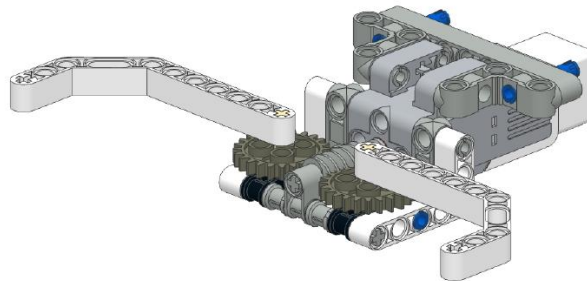
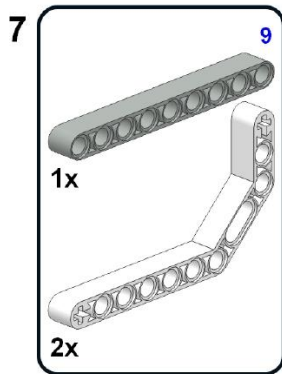
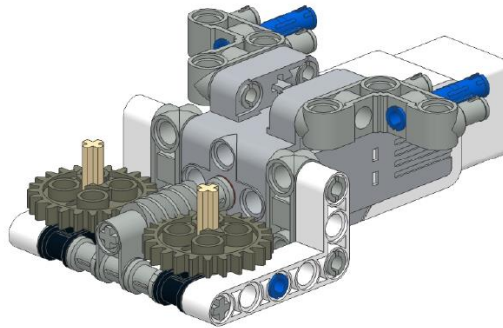
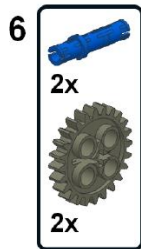
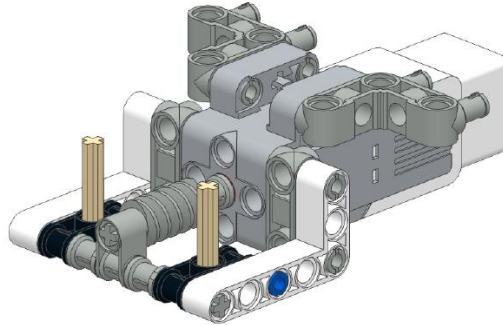
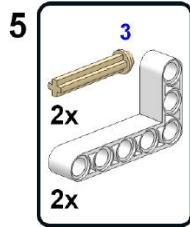


Touch Sensor Attachment

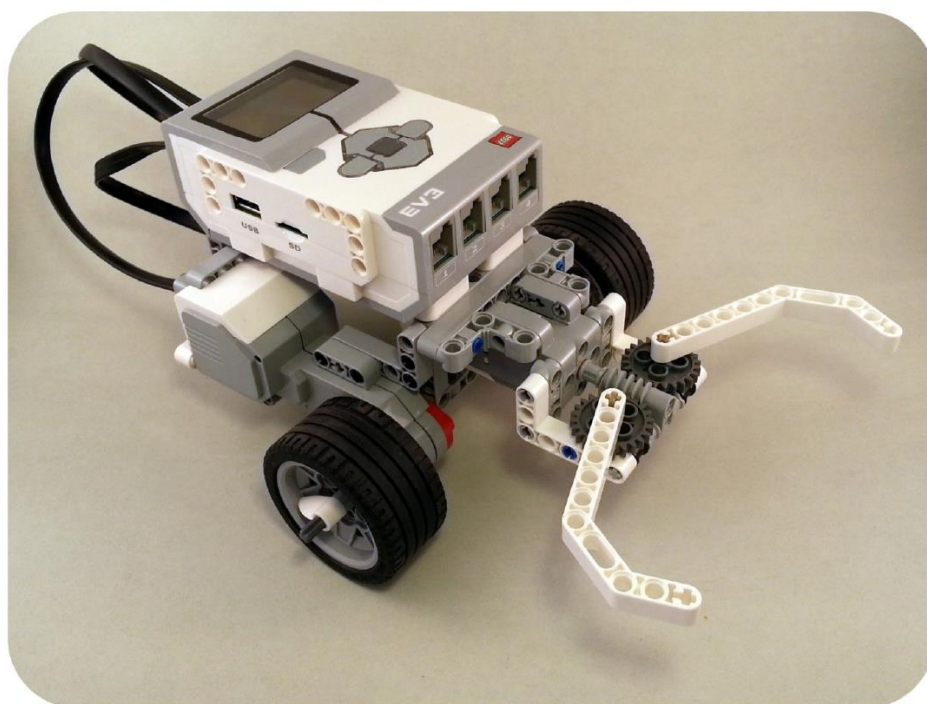
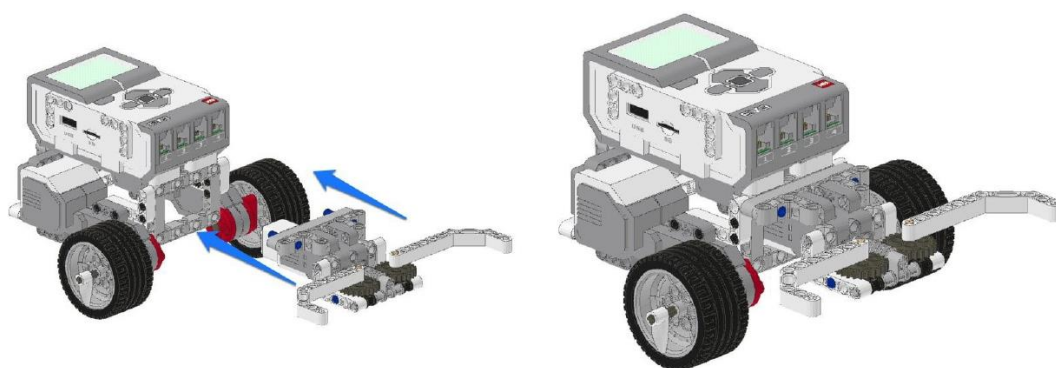


Gripper Attachment

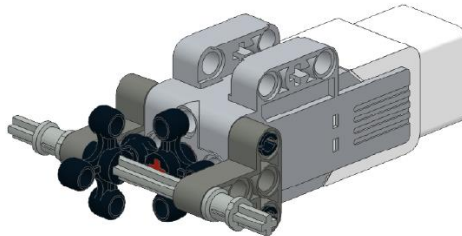
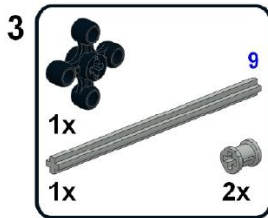
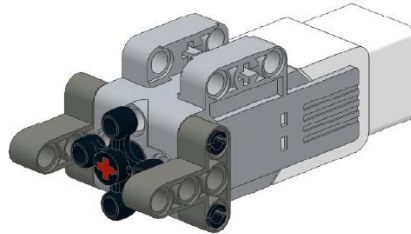
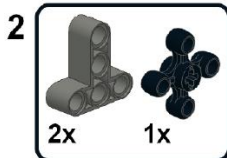
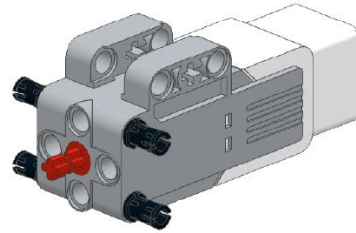
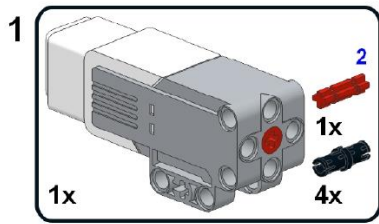


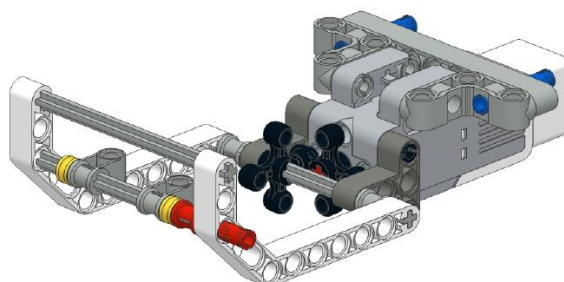
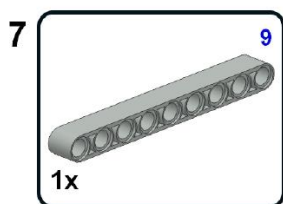
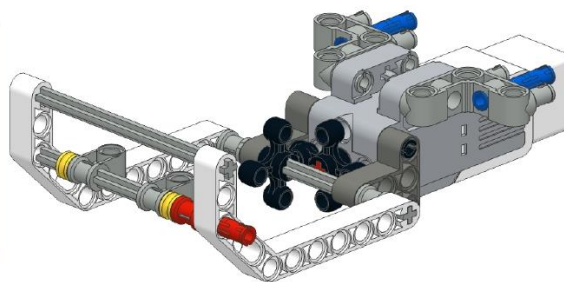
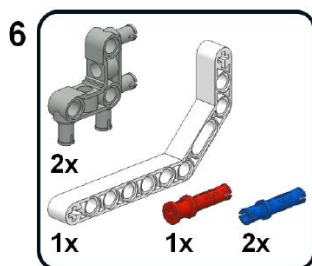
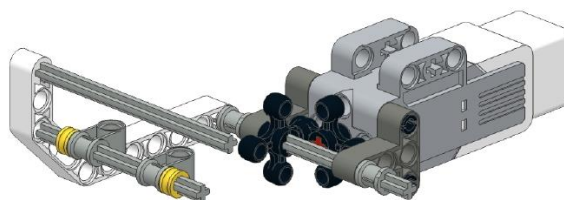
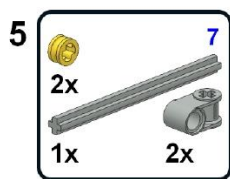
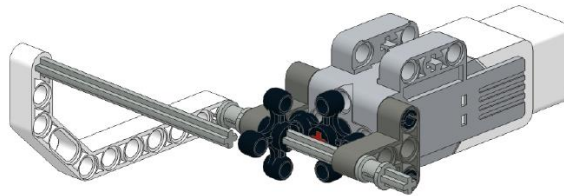
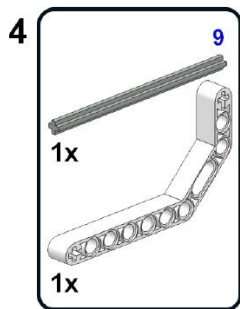


Attach the Gripper to the front of the Robot



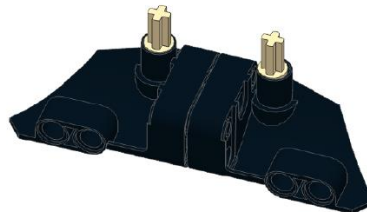
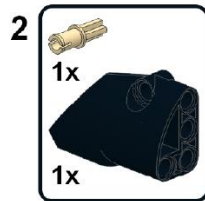
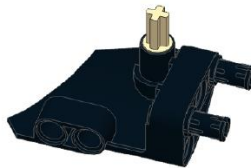
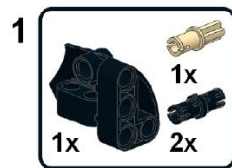
Cargo Delivery Attachment



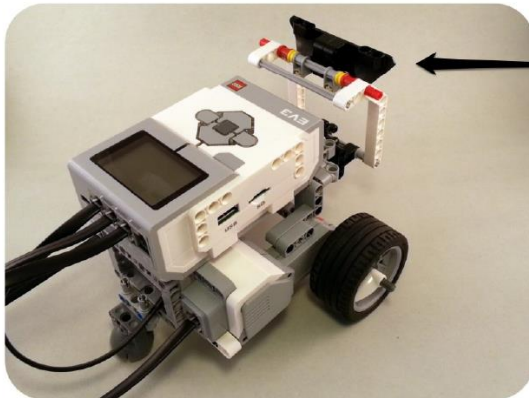
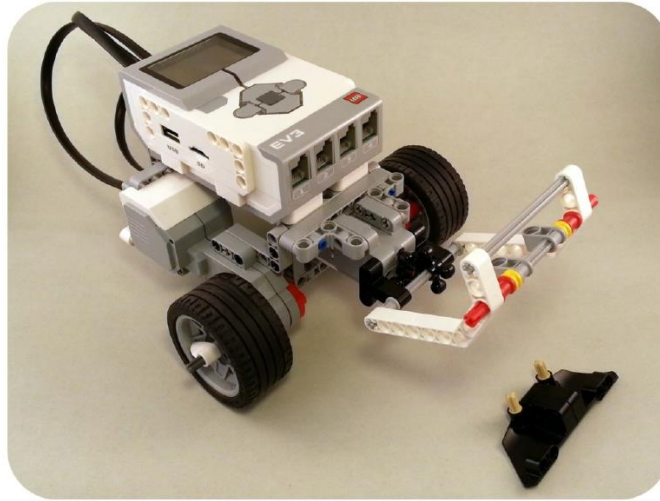


Signal Repeater

To be used with the Cargo Delivery Attachment



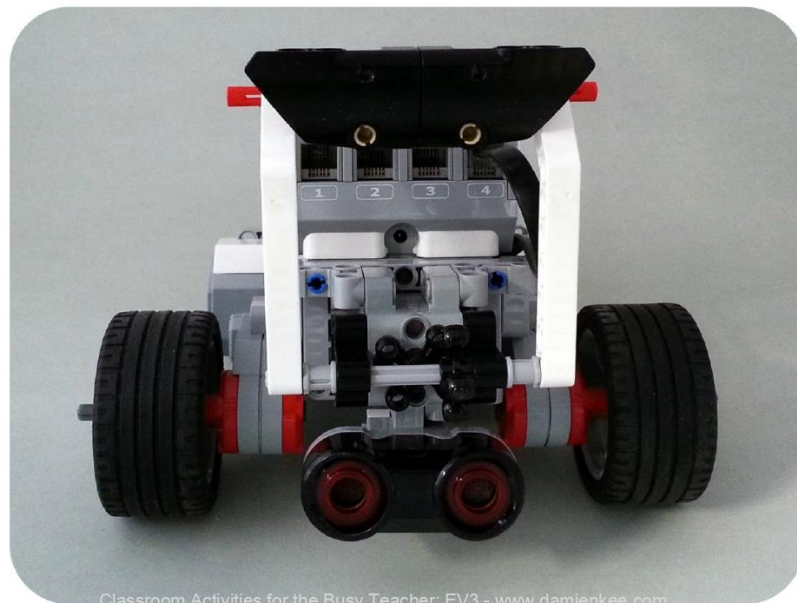
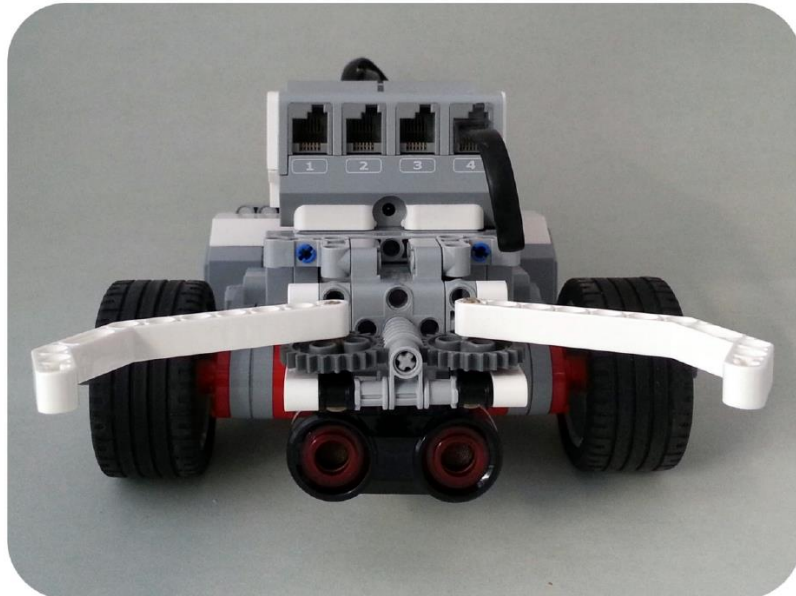
**Attach the Cargo Delivery Attachment
to the front of the Robot**



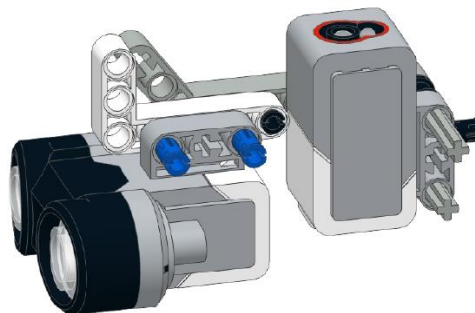
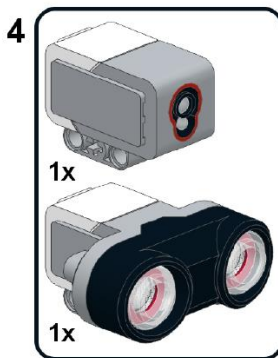
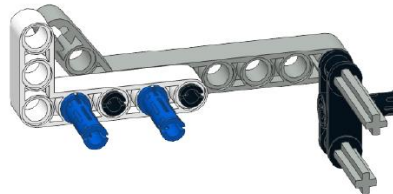
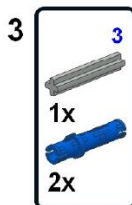
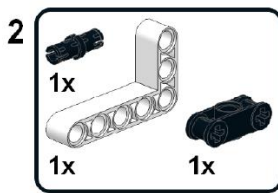
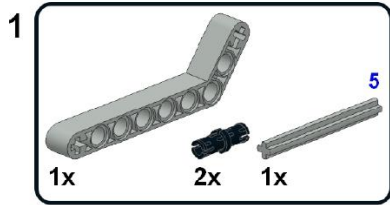
The 'Signal Repeater' will sit loosely in the Cargo Delivery arm when in a raised position. Lower the Cargo Delivery arm to drop the Signal Repeater

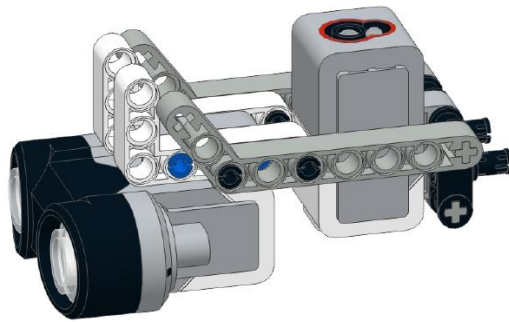
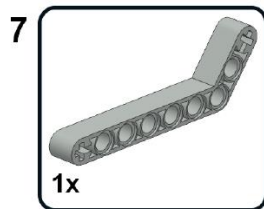
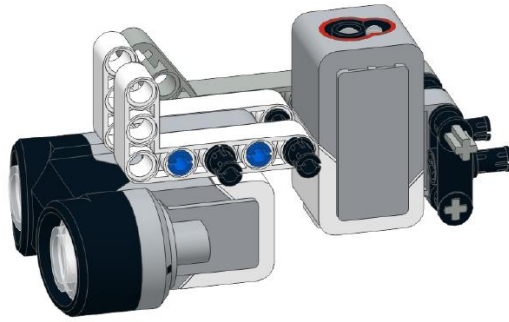
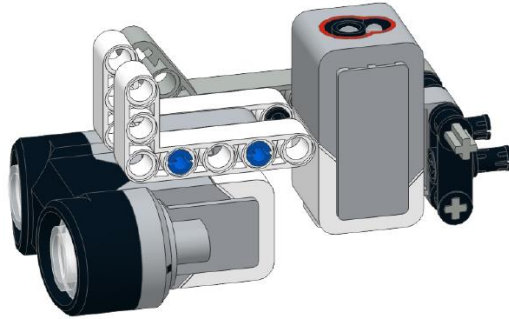
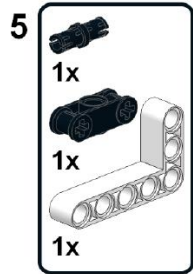


The Ultrasonic Sensor Attachment can be used with both the Cargo Delivery Attachment and Gripper Attachment



Combined Colour - Ultrasonic Sensor Attachment





Snap the combined Colour-Ultrasonic Sensor Attachment to the front of the robot

