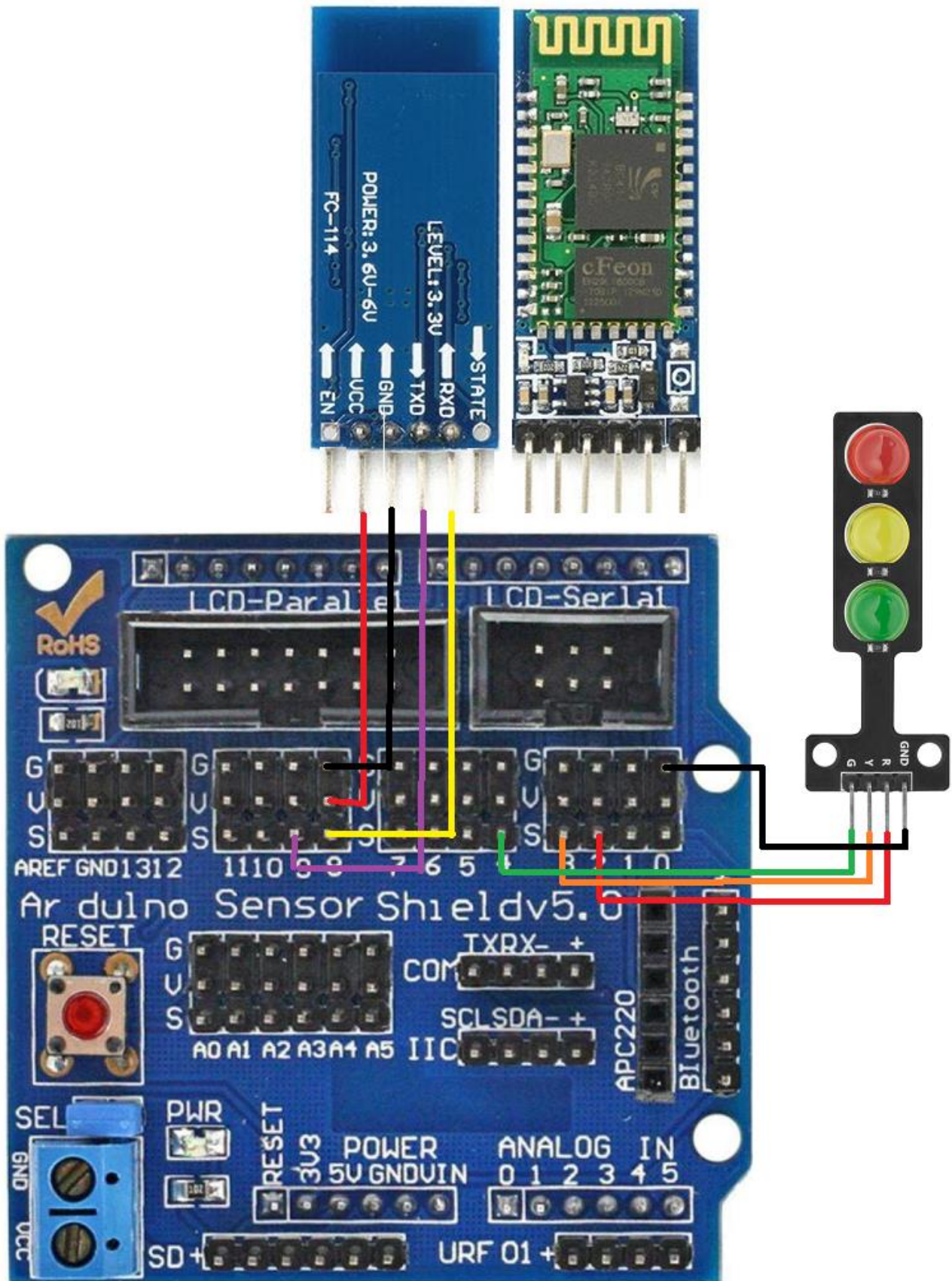
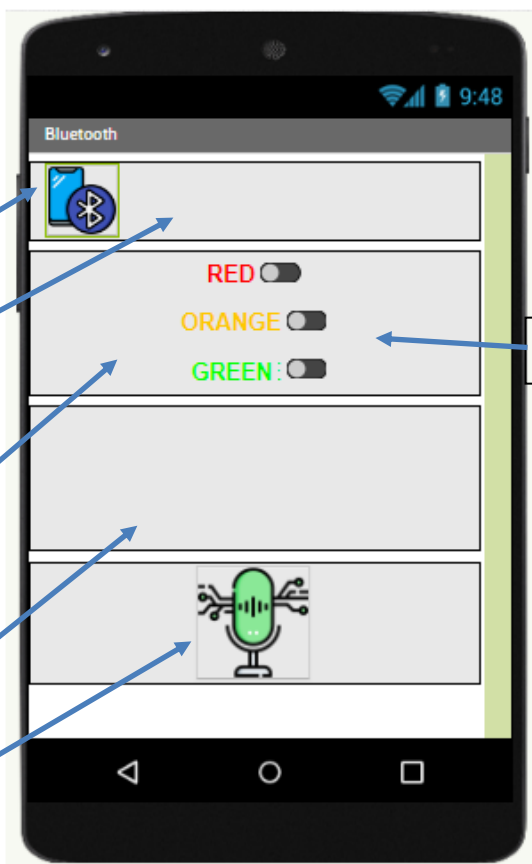


Το κύκλωμα



Οθόνη



All Components

- Screen1
 - HorizontalArrangement1
 - Label5
 - ListPicker1
 - Label1
 - VerticalArrangement1
 - SwitchRED
 - Label2
 - SwitchORANGE
 - Label3
 - SwitchGREEN
 - HorizontalArrangement3
 - HorizontalArrangement2
 - Speech
 - Label4
 - BluetoothClient1
 - SpeechRecognizer1

Rename Delete

Media

- bluetooth.png
- natural-...ssing.png
- bluetooth2.png

Upload File ...

Πρόγραμμα στο AppInventor

```
when ListPicker1 .BeforePicking
do set ListPicker1 . Elements to BluetoothClient1 . AddressesAndNames
```

```
when ListPicker1 .AfterPicking
do set ListPicker1 . Selection to call BluetoothClient1 . Connect
address ListPicker1 . Selection
if BluetoothClient1 . IsConnected
then set Label1 . Text to " Συνδέθηκε η συσκευή "
else set Label1 . Text to " Δεν συνδέθηκε η συσκευή "
```

```
when SwitchRED .Changed
do if BluetoothClient1 . IsConnected
then if SwitchRED . On = true
then call BluetoothClient1 . SendText
text " 1 "
else call BluetoothClient1 . SendText
text " 0 "
```

```
when SwitchORANGE .Changed
do if BluetoothClient1 . IsConnected
then if SwitchORANGE . On = true
then call BluetoothClient1 . SendText
text " 3 "
else call BluetoothClient1 . SendText
text " 2 "
```

```
when SwitchGREEN .Changed
do if BluetoothClient1 . IsConnected
then if SwitchGREEN . On = true
then call BluetoothClient1 . SendText
text " 5 "
else call BluetoothClient1 . SendText
text " 4 "
```

```
when Speech .Click
do if BluetoothClient1 . IsConnected
then call SpeechRecognizer1 . GetText
```


when `SpeechRecognizer1` .AfterGettingText

`result` `partial`

```
do if BluetoothClient1 .IsConnected
then
  set Label4 .Text to get result
  if get result = "red on"
  then
    call BluetoothClient1 .SendText
      text "1"
    set SwitchRED .On to true
  else if get result = "red off"
  then
    call BluetoothClient1 .SendText
      text "0"
    set SwitchRED .On to false
  else if get result = "orange on"
  then
    call BluetoothClient1 .SendText
      text "3"
    set SwitchORANGE .On to true
  else if get result = "orange off"
  then
    call BluetoothClient1 .SendText
      text "2"
    set SwitchORANGE .On to false
  else if get result = "green on"
  then
    call BluetoothClient1 .SendText
      text "5"
    set SwitchGREEN .On to true
  else if get result = "green off"
  then
    call BluetoothClient1 .SendText
      text "4"
    set SwitchGREEN .On to false
```

Εγκατάσταση και πρόγραμμα στο MBlock

Extension στο MBlock



Search: pcm

Arduino Uno

HC-05 Bluetooth PCM
Developers: pcmarr...
Arduino Bluetooth HC-05
Module Extension UPDATED
(2021) for mBlock 5+

when Arduino Uno starts up

Bluetooth HC-05 RxD/Tx: 8 ▼ TxD/Rx: 9 ▼ Baudrate: 9600 ▼

set digital pin 2 output as low ▼

set digital pin 3 output as low ▼

set digital pin 4 output as low ▼

forever

Read data from HC-05

if HC-05 data received = 0 ▼ then

set digital pin 2 output as low ▼

RED LED στο pin2

if HC-05 data received = 1 ▼ then

set digital pin 2 output as high ▼

if HC-05 data received = 2 ▼ then

set digital pin 3 output as low ▼

ORANGE LED στο pin3

if HC-05 data received = 3 ▼ then

set digital pin 3 output as high ▼

if HC-05 data received = 4 ▼ then

set digital pin 4 output as low ▼

GREEN LED στο pin4

if HC-05 data received = 5 ▼ then

set digital pin 4 output as high ▼

wait 0.2 seconds